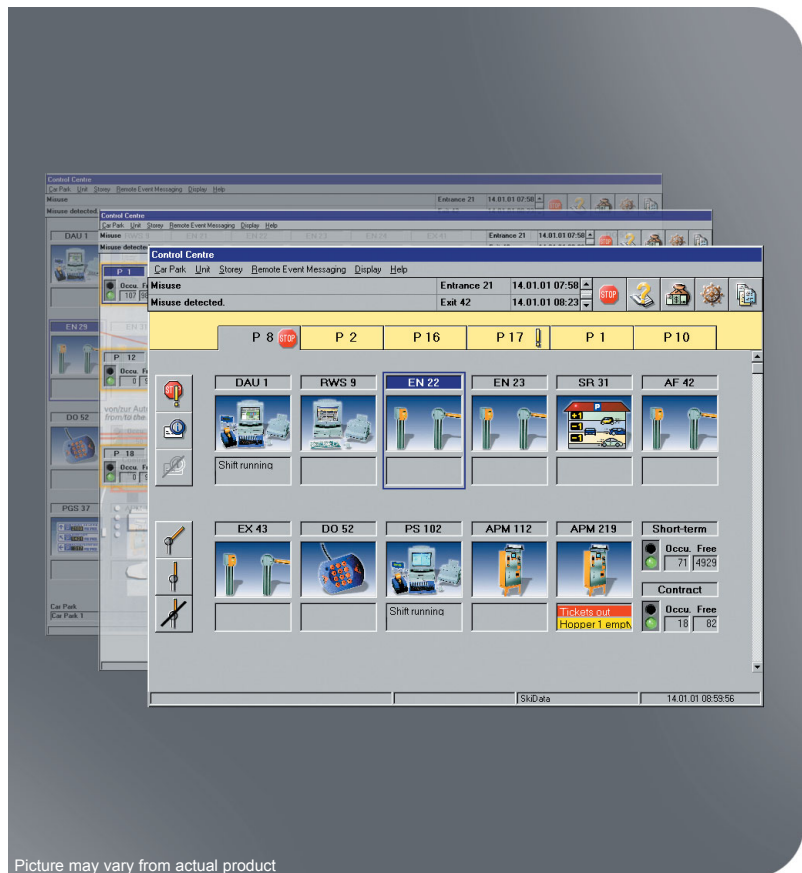


The Control Centre application provides a graphical overview of all peripheral devices in all interconnected car parks of the same car park company. Each individual device can be controlled separately. There is no need to boot the Control Centre program as it is called up automatically when the system is started up and remains active in the background. A permanently visible control console indicates the current system status as well as any system events should they occur. The Control Console also allows the operator to switch between the main system applications, viz. Administration Centre, Control Centre, Sales Centre and Online Help.



Features

- Pictorial representation of all devices
- All functions constantly available for fastest possible operation
- Car Park overview if the screen resolution is higher than 800 x 600
- Adaptation to higher monitor resolutions. To have optimum conditions if the system consists of many devices

Functions

- Background graphics for car park overview and each individual car park window (if the screen resolution is higher than 800 x 600) – different graphics possible for all Workstations
- Each workstation can be set to standard or extended display mode
- System events can be configured to show up on either of the two available system event lists (errors are assigned to one list, and intercom transactions to the other by default)
- Events can be set to require additional acknowledgement (confirmation dialogue)
- Error handling and marking from any workplace on the system
- Windows of the main programs (Control Centre, Admin. Centre, Sales Centre and Online Help) can be placed anywhere on the screen
- System status is indicated by easily identifiable symbols and plain-text messages

SKIDATA AG • Untersbergstraße 40 • A-5083 Gartenau
[t] +43 (0) 62 46/8 88-0 • [f] +43 (0) 62 46/8 88-7 • [e] info@skidata.com • [w] www.skidata.com

Version 11.0 (from Release 14) • 31.07.2003 • Copyright © 2003 by SKIDATA AG

This documentation may contain representations of registered product or service trademarks owned by SKIDATA AG or third parties, as well as references to proprietary know-how protected by copyright laws or other legal provisions.

In any case the intellectual property rights remain exclusively with their respective owners.
This document is subject to change without notice. It cannot form part of a binding contract.

- Special list page shows details on device status and most recent rejection instances
- Device speed selection allows for direct switching to Device Details view
- Indication of reserved parking spaces
- Display of status and system event messages on control console
- Definable alert sound notifies operators of system events
- Easily identifiable system status icons
- Fast switching between Administration Centre, Control Centre, Sales Centre and Online Help
- User information for customers at Parking Columns, Door/Shutter Openers and Automatic Payment Machines
- Authorisation setup for each function
- Default selection of car parks displayed on-screen can be configured for each Workstation – Setting affects all control functions and display of error and status messages on Control Centre and Control Console
- Authorised operators may edit settings temporarily via Control Centre (settings will automatically revert to defaults upon log-off)
- Configuration and display of operating parameters for car park notice boards and storey counters
- Icons representing system units and levels can be arranged on-screen as required
- Optional automatic display or deletion of REM messages if Administration Unit is defined as REM recipient
- Functions for establishing/terminating intercom or closed-circuit video connections
- Control of all peripheral devices
- Special *control functions* for *parking columns and barriers*: manual opening of barriers for a single passage; activation/deactivation of *Keep Open / Keep Closed* position of a barrier; deactivation/reactivation of a barrier unit; activation/deactivation of *Keep Open* position of a shutter door; activation/deactivation of automated barrier operation (barrier actuation via vehicle detection loop); reversal of direction of reversible lanes to entry or exit; cashing up and unlocking cash terminals of Electronic Purses; activation/deactivation of Licence Plate Identification
- Control functions for *Automatic Payment Machines*: deactivation of activated alarm, deactivation/reactivation of APM, staff member can allow/block issuing of replacements for lost tickets; adjustable price, display or print data of the last transactions, cash up and unlock terminals of Electronic Purses, shutdown device, details listed include filling levels of hoppers, main cash container, main banknote container and dispenser
- Control functions for *Pay Stations*: cash up and unlock terminals of Electronic Purses, shutdown device, details listed include cash and cheque levels
- Control functions for *Administration Unit, Workstations*: Shutdown device
- Global control functions for *multiple car parks / multiple facility systems*: activation/deactivation of *Keep Open / Keep Closed* position of all barriers, deactivation of transaction control ('Anti-pass-back function') for one transaction (e.g. following a power failure), deactivation of section transaction control (e.g. following a power failure), activation/deactivation of automated operation of all barriers, Fire Alarm function (sets all entrance barriers to *Keep Closed* and all exit barriers to *Keep Open*), close/open Car Park – if a car park is closed only cards have entry permission which are also allowed to enter the car park if full; exit is granted as usual